



INDOFINE Chemical Company, Inc.

121 Stryker Lane, Bldg. 30, Suite 1 • Hillsborough, NJ 08844 • U.S.A.

Phone: (908) 359-6778 • FAX: (908) 359-1179

website: www.indofinechemical.com

e-mail: chemical@indofinechemical.com

CERTIFICATE OF ANALYSIS

Catalog Number: 027309

Product Name: **ROTTLERIN**
(Mallotoxin)

CAS Number: [82-08-6]

Lot Number: 2204667

Chemical Formula: C₃₀H₂₈O₈

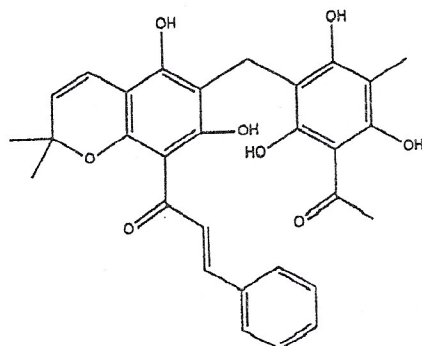
Molecular Weight: 516.5

Appearance: Orange red crystal

Solubility: DMSO, Ethanol, Chloroform

Storage: Store cold. Keep away from strong light & heat.

Purity(HPLC): 98.02%



Prepared by:
Ramesh Mandadi
Ramesh Mandadi
Director of Operations

Reviewed and Approved by:
Sujata Moton
Sujata Moton
VP



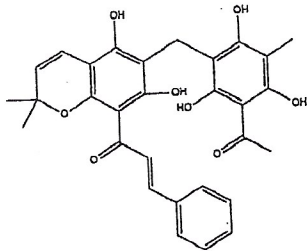
INDOFINE Chemical Company, Inc.

121 Stryker Lane, Bldg. 30, Suite 1 • Hillsborough, NJ 08844 • U.S.A.

Phone: (908) 359-6778 • FAX: (908) 359-1179

website: www.indofinechemical.com

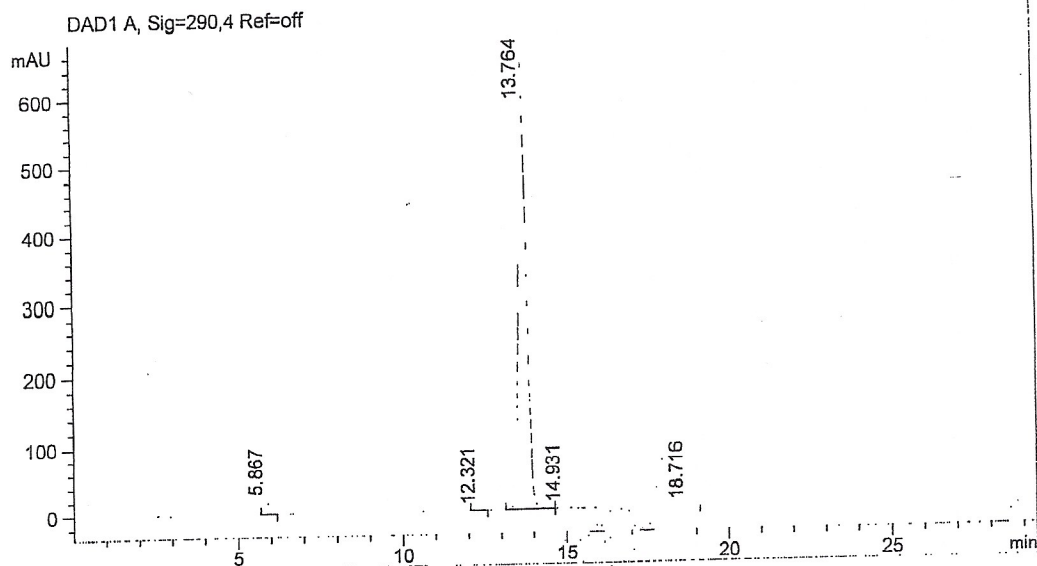
e-mail: chemical@indofinechemical.com



HPLC ANALYSIS

Catalog No.: 027309
Product Name: Rottlerin
Lot No.: 2204667

Mobile Phase A: Acetonitrile 90
Mobile Phase B: 0.03% H3PO4/Water 10
Flow rate : 1.0ml/min
Temperature : 30°C
Column :Kromasil C18 250*4.6mm 5um 100A
Sample Concentration: 0.5mg/ml Chloroform
Injection volume: 2ul



Signal 1: DAD1 A, Sig=290,4 Ref=off

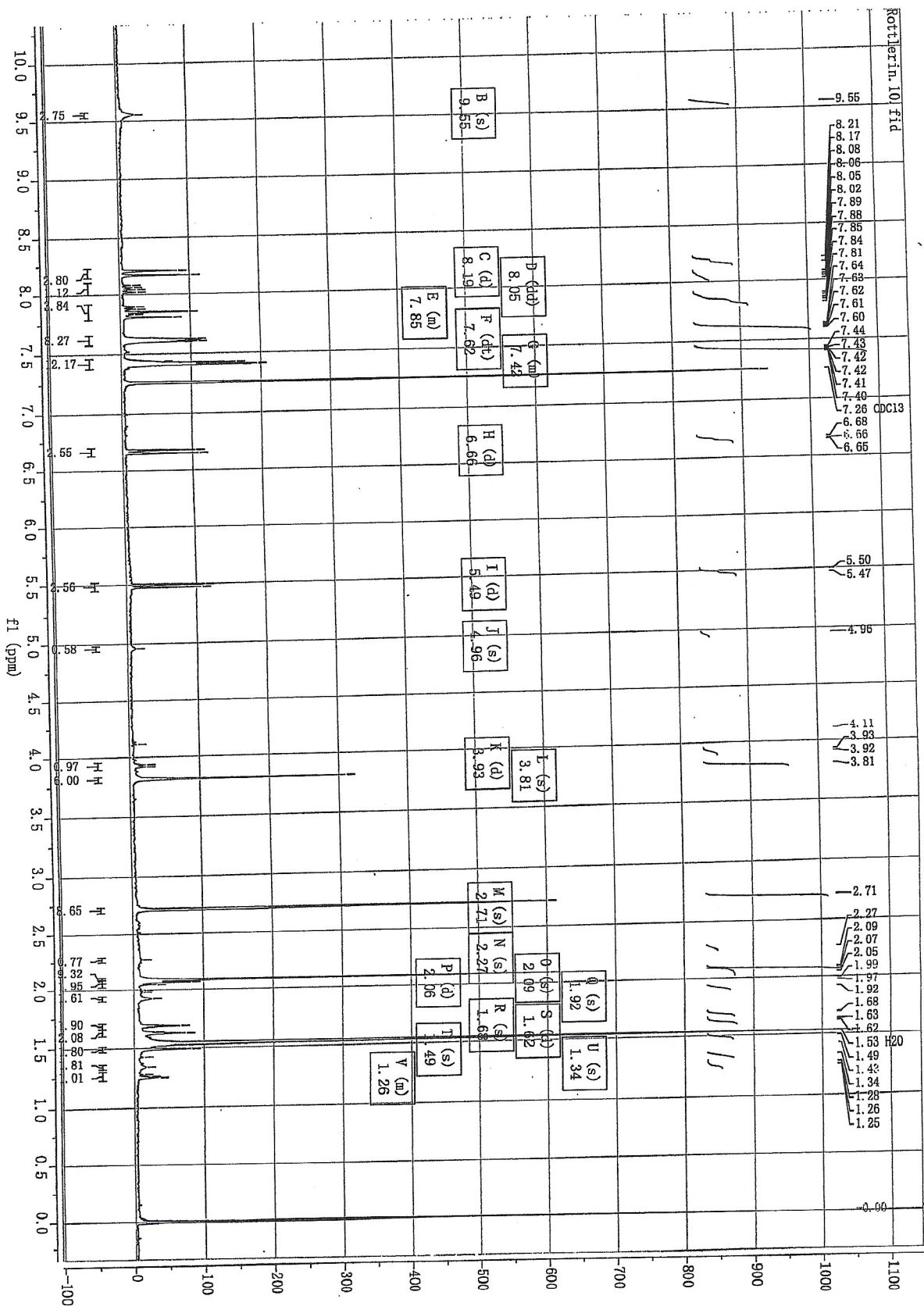
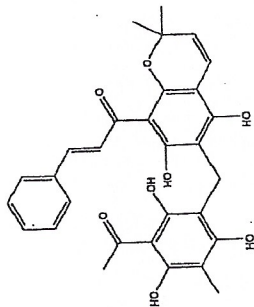
Peak #	RT [min]	Type	Width [min]	Height	Area	Area %
1	5.867	MM	0.124	20.204	150.563	1.378
2	12.321	MM	0.225	0.852	11.486	0.105
3	13.764	MF	0.276	645.852	1.071e4	98.016
4	14.931	FM	0.301	1.764	31.883	0.292
5	18.716	MM	0.335	1.135	22.847	0.209

Prepared by:
Ramesh Mandadi
Ramesh Mandadi
Director of Operations

Reviewed and Approved by:
Sujata Moton
Sujata Moton
VP



INDOFINE Chemical Company, Inc.
121 STRYKER LANE
BLDG. 30, SUITE 1
HILLSBOROUGH, NJ 08844



Catalog No.: 027309
Product Name: Rotlerin
Lot No.: 2204667